



Observer and Debriefing Module in TUFMAN2 (T2)

PIRFO Debriefers' Workshop

SPC Headquarters
18th – 22nd November 2019
Noumea, New Caledonia



Presentation Outline



- Overview of the Observer and Debriefing Modules in T2
- Design and functionalities of T2
- Current and Future Developments
- T2 Demo

What is TUFMAN2 (T2)?

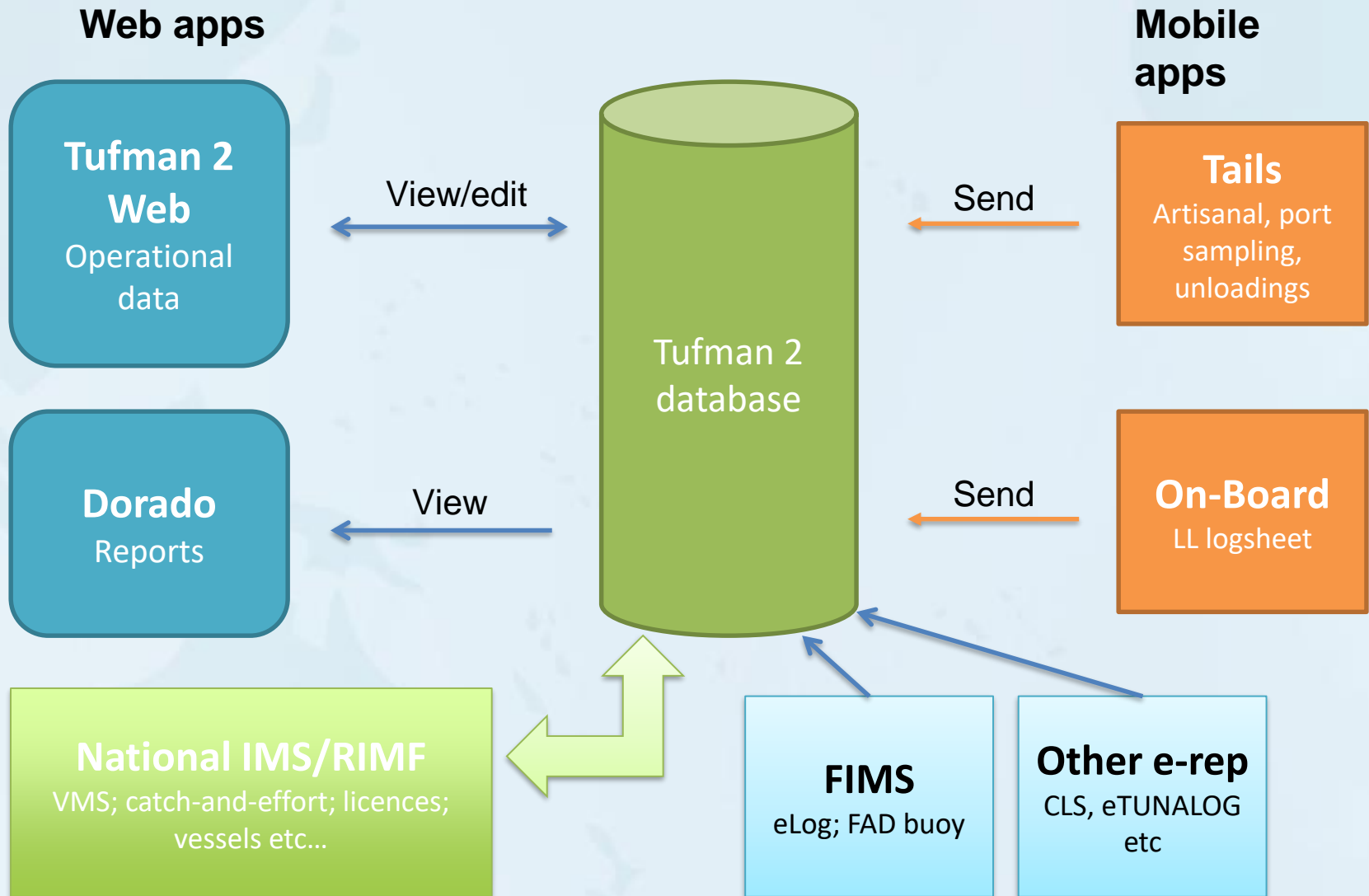


“Observer and Debriefing Modules in T2”

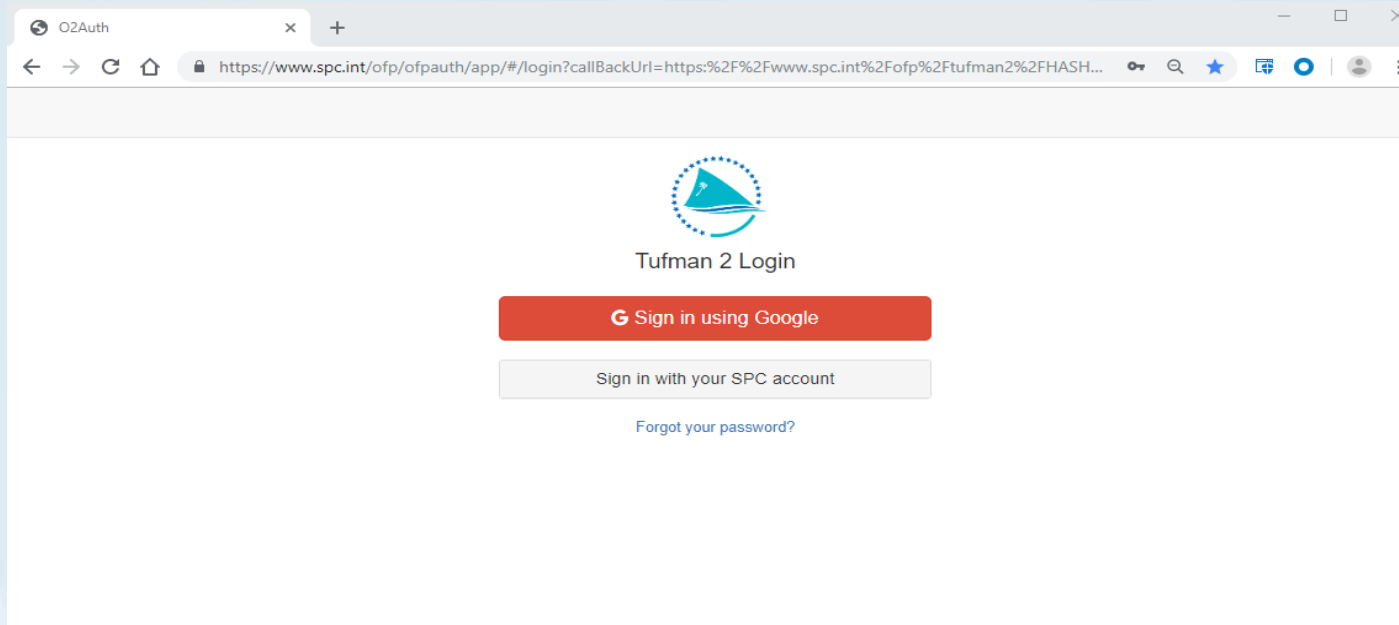
- ❑ Database system developed by SPC-OFP for entering all fisheries data such as **log-sheets data**, **observer data**, **port sampling data**, **cannery data** and **artisanal data**, as well linking these datasets to the **VMS data** and other **Reference datasets**
- ❑ Currently used in production – SPC and its members, WCPFC and FFA are using T2



T2 System Architecture



TUFMAN2 System



- Login into TUFMAN2
- Using your SPC account or Google Gmail account

Observer Module



T2 Tufman 2 x +

← → ↻ 🏠 🔒 https://www.spc.int/ofp/tufman2/#/observer/trip

TUFMAN 2 Tasks ▾ Logsheets ▾ **Observer ▾** Port ▾ Artisanal ▾ Cannery ▾ Ref tables ▾ Security ▾ Logs ▾ SPC Admin ▾ Reports 📄 Help ▾

colleyf@spc.int 10 Jul 2019, 13:28 | HIVE | en

Observer trips 1931

	Trip #	Vessel	Flag	Gear	Program...	Departure p...	Departure date	Return port	Return date	System src	Country src	Status	Last edited	Last edit by	Assigned to		
👍 👎 👤 ⚙️ 🗑️	TPL / 18-07 *	MARAWA II	KI	Purse seine	FAOB	TARAWA	31 Dec 2018	GENERAL SANTOS	09 Feb 2019	Tufman2	OFF	264	09 Jul 2019 11:11	magalic@spc.int	magalic@spc.int	✎	🗑️
👍 👎 👤 ⚙️ 🗑️	AHS / 18-0	MATAIKA	KI	Purse seine	FAOB	BUSAN	31 Dec 2018	KIRITIMATI	28 Jan 2019	Tufman2	OFF	259	03 Jun 2019 09:15	nabilab@spc.int	nabilab@spc.int	✎	🗑️
👍 👎 👤 ⚙️ 🗑️	NBE / 18-06 *	XIANG FA 8	CN	Purse seine	FMOB	TARAWA	31 Dec 2018	TARAWA	21 Jan 2019	Tufman2	OFF	264	17 Jun 2019 09:25	colleyf@spc.int	nalaf@spc.int	✎	🗑️
👍 👎 👤 ⚙️ 🗑️	LLN / 18-01 *	MARAWA I	KI	Purse seine	FAOB	TARAWA	29 Dec 2018	KIRITIMATI	20 Jan 2019	Tufman2	OFF	262	04 Jul 2019 09:00	nabilab@spc.int	nabilab@spc.int	✎	🗑️
👍 👎 👤 ⚙️ 🗑️	JEG / 18-08 *	MARIRAOI	KI	Purse seine	FAOB	KIRITIMATI	29 Dec 2018	KIRITIMATI	16 Jan 2019	Tufman2	OFF	264	04 Jul 2019 08:56	nabilab@spc.int	flavied@spc.int	✎	🗑️
👍 👎 👤 ⚙️ 🗑️	KKF / 18-08 *	MELISSA	FM	Purse seine	FAOB	FUNAFUTI	29 Dec 2018	POHNPEI	07 Feb 2019	Tufman2	OFF	264	03 Jun 2019 09:45	aurelienp@spc.int	nalaf@spc.int	✎	🗑️
👍 👎 👤 ⚙️ 🗑️	AKA / 18-06 *	LOMALO	MH	Purse seine	FAOB	MAJURO	29 Dec 2018	TARAWA	25 Jan 2019	Tufman2	OFF	264	18 Jun 2019 11:35	carolinem@spc.int	carolinem@spc.int	✎	🗑️
👍 👎 👤 ⚙️ 🗑️	APS / 18-11 *	SOLANDER KARIQA	FJ	Longline	FJOB	SUVA	29 Dec 2018	SUVA	27 Feb 2019	Tufman2	FJ	264	09 Jul 2019 09:40	ritova.asinate@gmail...	ritova.asinate@gmail...	✎	🗑️
👍 👎 👤 ⚙️ 🗑️	JSV / 18-01 *	AMERICAN VICTO...	US	Purse seine	TTOB	PAGO PAGO	29 Dec 2018	PAGO PAGO	02 Feb 2019	Tufman2	OFF	262	06 Jun 2019 14:54	aurelienp@spc.int	aurelienp@spc.int	✎	🗑️
👍 👎 👤 ⚙️ 🗑️	ARI / 18-08 *	SUI YUAN YU 25	FJ	Longline	FJOB	SUVA	28 Dec 2018	SUVA	22 Jan 2019	Tufman2	OFF	262	03 May 2019 11:21	nabilab@spc.int	nabilab@spc.int	✎	🗑️
👍 👎 👤 ⚙️ 🗑️	NOM / 18-0	SOUTHERN SEAS ...	SB	Purse seine	FAOB	HONIARA	27 Dec 2018	HONIARA	10 Feb 2019	Tufman2	OFF	259	08 Mar 2019 15:54	nabilab@spc.int	nabilab@spc.int	✎	🗑️
👍 👎 👤 ⚙️ 🗑️	NPC / 18-05 *	TAIYO CHUUK	FM	Purse seine	FAOB	POHNPEI	27 Dec 2018	POHNPEI	19 Jan 2019	Tufman2	OFF	262	07 May 2019 10:25	nabilab@spc.int	nabilab@spc.int	✎	🗑️
👍 👎 👤 ⚙️ 🗑️	MDB / 18-07 *	ADI MELANIA	FJ	Longline	FJOB	SUVA	27 Dec 2018	SUVA	12 Jan 2019	Tufman2	FJ	264	28 May 2019 15:24	vataniyaragillisabeta...	vataniyaragillisabeta...	✎	🗑️
👍 👎 👤 ⚙️ 🗑️	LOT / 18-04 *	AURORA B	ES	Purse seine	CKOB	PAGO PAGO	27 Dec 2018	PAGO PAGO	01 Feb 2019	Tufman2	OFF	264	19 Jun 2019 09:32	colleyf@spc.int	nalaf@spc.int	✎	🗑️
👍 👎 👤 ⚙️ 🗑️	PHT / 18-0	PACIFIC JOURNEY...	FM	Purse seine	FAOB	KAOHSIUNG	26 Dec 2018	KOSRAE	29 Jan 2019	Tufman2	OFF	259	03 Jun 2019 10:57	nabilab@spc.int	nabilab@spc.int	✎	🗑️
👍 👎 👤 ⚙️ 🗑️	LLH / 18-05 *	SEA BOUNTY	US	Purse seine	TTOB	POHNPEI	26 Dec 2018	POHNPEI	26 Jan 2019	Tufman2	OFF	264	27 May 2019 08:50	nalaf@spc.int	nalaf@spc.int	✎	🗑️
👍 👎 👤 ⚙️ 🗑️	KPO / 18-04 *	DISCOVERY 102	PG	Purse seine	PGOB	RABAU	26 Dec 2018	RABAU	13 Jan 2019	Tufman2	OFF	262	09 Apr 2019 11:03	nabilab@spc.int	nabilab@spc.int	✎	🗑️
👍 👎 👤 ⚙️ 🗑️	LAP / 18-02 *	SAJO POSEDONIA	KR	Purse seine	TVOB	HONIARA	26 Dec 2018	HONIARA	09 Feb 2019	Tufman2	WCPCF	264	04 Jul 2019 11:51	murphy.paulis@wcpf...	murphy.paulis@wcpf...	✎	🗑️
👍 👎 👤 ⚙️ 🗑️	LZK / 18-0	KOOS 108	MH	Purse seine	FAOB	MAJURO	25 Dec 2018	MAJURO	28 Jan 2019	Tufman2	OFF	259	03 Jun 2019 12:50	nabilab@spc.int	nabilab@spc.int	✎	🗑️
👍 👎 👤 ⚙️ 🗑️	JJG / 18-03 *	MARSHALLS 201	MH	Purse seine	FAOB	MAJURO	25 Dec 2018	MAJURO	24 Jan 2019	Tufman2	OFF	264	03 Jun 2019 12:50	flavied@spc.int	flavied@spc.int	✎	🗑️
👍 👎 👤 ⚙️ 🗑️	SOW / 18-02 *	WIN RICH 707	TW	Purse seine	PGOB	KAOHSIUNG	25 Dec 2018	RABAU	01 Feb 2019	Tufman2	OFF	263	04 Jul 2019 14:33	flavied@spc.int	flavied@spc.int	✎	🗑️
👍 👎 👤 ⚙️ 🗑️	TPK / 18-08 *	CARIBE	KR	Purse seine	TVOB	FUNAFUTI	25 Dec 2018	KIRITIMATI	19 Jan 2019	Tufman2	OFF	262	18 Apr 2019 14:11	nabilab@spc.int	nabilab@spc.int	✎	🗑️
👍 👎 👤 ⚙️ 🗑️	TPK / 18-08 *	CARIBE	KR	Purse seine	TVOB	FUNAFUTI	25 Dec 2018	KIRITIMATI	19 Jan 2019	Tufman2	WCPCF	263	10 Jul 2019 11:13	murphy.paulis@wcpf...	murphy.paulis@wcpf...	✎	🗑️
👍 👎 👤 ⚙️ 🗑️	TNB / 18-05 *	GABRIELLE LT	PG	Purse seine	FAOB	RABAU	24 Dec 2018	RABAU	30 Dec 2018	Tufman2	OFF	264	14 Mar 2019 09:45	carolinem@spc.int	carolinem@spc.int	✎	🗑️
👍 👎 👤 ⚙️ 🗑️	AFN / 18-04 *	QUEEN MARY	FM	Purse seine	FAOB	FUNAFUTI	24 Dec 2018	FUNAFUTI	28 Jan 2019	Tufman2	OFF	264	21 Jun 2019 11:40	nalaf@spc.int	nalaf@spc.int	✎	🗑️
👍 👎 👤 ⚙️ 🗑️	HEK / 18-03 *	PACIFIC JOURNEY...	FM	Purse seine	FAOB	KOSRAE	24 Dec 2018	POHNPEI	03 Feb 2019	Tufman2	OFF	264	27 Jun 2019 11:32	carolinem@spc.int	carolinem@spc.int	✎	🗑️
👍 👎 👤 ⚙️ 🗑️	NAB / 18-02 *	DOLORES 870	PG	Purse seine	PGOB	RABAU	24 Dec 2018	MADANG	02 Feb 2019	Tufman2	OFF	264	05 Jul 2019 10:50	elizabethca@spc.int	elizabethca@spc.int	✎	🗑️
👍 👎 👤 ⚙️ 🗑️	IIC / 18-03 *	KOOS 107	MH	Purse seine	FAOB	MAJURO	23 Dec 2018	MAJURO	27 Jan 2019	Tufman2	OFF	264	05 Jul 2019 09:50	sabrinap@spc.int	sabrinap@spc.int	✎	🗑️
👍 👎 👤 ⚙️ 🗑️	FFB / 18-0	SOUTHERN SEAS ...	SB	Purse seine	FAOB	HONIARA	23 Dec 2018	RABAU	21 Jan 2019	Tufman2	OFF	259	13 Mar 2019 11:05	nabilab@spc.int	nabilab@spc.int	✎	🗑️

Add/Edit/Delete Record



TUFMAN 2 Tasks Logsheets **Observer** Port Artisanal Cannery Ref tables Security Logs SPC Admin Reports Help

colleyf@spc.int 11 Jul 2019, 10:22 | HIVE en

Observer trips 1931

	Trip #	Vessel	Flag	Gear	Program...	Departure p...	Departure da...	Return port	Return date	System src	Country src	Status	Last edited	Last edit by	Assigned to		
	TPL / 18-07 *	MARAWA II	KI	Purse seine	FAOB	TARAWA	31 Dec 2018	GENERAL SANTOS	09 Feb 2019	Tufman2	OFF	264	09 Jul 2019 11:11	magalic@spc.int	magalic@spc.int	Edit	Delete
	AHS / 18-0	MATAIKA	KI	Purse seine	FAOB	BUSAN	31 Dec 2018	KIRITIMATI	28 Jan 2019	Tufman2	OFF	259	03 Jun 2019 09:15	nabilab@spc.int		Edit	Delete
	NBE / 18-06 *	XIANG FA 8	CN	Purse seine	FMOB	TARAWA	31 Dec 2018	TARAWA	21 Jan 2019	Tufman2	OFF	264	17 Jun 2019 09:25	colleyf@spc.int	nalaf@spc.int	Edit	Delete
	LLN / 18-01 *	MARAWA I	KI	Purse seine	FAOB	TARAWA	29 Dec 2018	KIRITIMATI	20 Jan 2019	Tufman2	OFF	262	04 Jul 2019 09:00	nabilab@spc.int		Edit	Delete

- Click on EDIT button to view and edit a trip record
- Click on DELETE (red bin icon) to delete a trip record

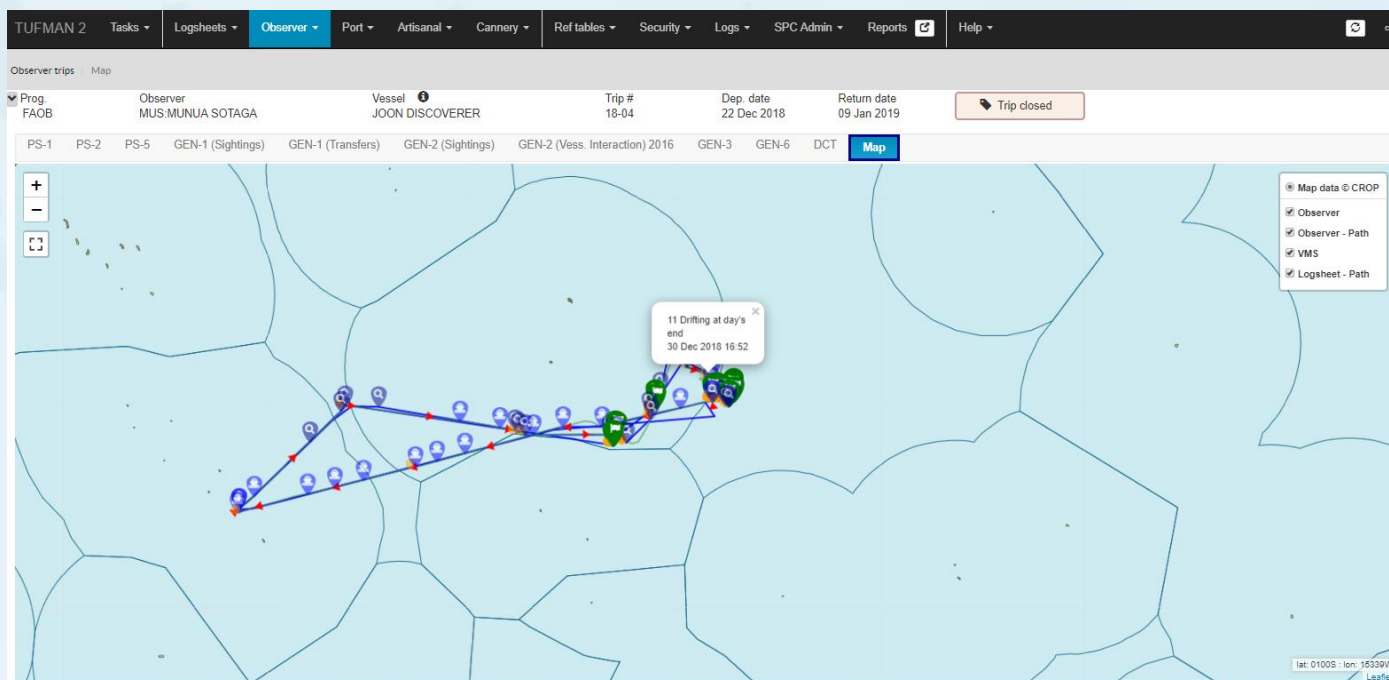
Observer Trips are linked to other datasets



Other fisheries datasets such as;

- VMS trip track
- Log-sheet data
- Unloading data
- Cannery data
- Port Sampling

Links			
Type			
Purseseine logsheet	KI		
Cannery unload	OFF		



Debriefing Module



- All versions supported
- Automatic link between debriefing and workbook data
- Jump to the observer data from the debriefing module using Links

TUFMAN 2											
Tasks ▾		Logsheets ▾		Observer ▾		Port ▾		Cannery ▾		Ref tables ▾	
Security ▾		Logs ▾		Reports		Help					
Observer debriefings				Trips				3			
				Debriefing				+ Create new observer debriefing			
		Trip #	Vessel	Gear	Departure date	Return date	Debriefer	Debriefer programme			
				
					JOA /	JUI HSIANG JIE	Longline	27 Oct 2017	27 Nov 2017	ISK:SIALE KAFOA FALEVAI	TOOB
					AHS /	SAJO COLUMBIA	Purse seine	13 Apr 2017		BIA:BRIAN KWAIMANI	
					ARH /	SOLOMON SAPPH...	Purse seine	25 Feb 2017	10 Mar 2017	PTC:PATTESON OMI	SBOB

Links			
Type			
Observer debriefing	OFF		Go to...
Purseseine logsheet	OFF		Go to...
Cannery unload	OFF		Go to...
Cannery unload	OFF		Go to...



Tufman2 - Data entry

- Questions score and ordering based on the form version
- Shortcut for fast data entry
- Auto-calculation of scores

Answer entry		Totals entry	Score check	Summary
Page #	Field	Answer	Extra info	Score
12	PS-1 page 2: a complete set	Cc		1/1
	Total possible storage	Cc		3/3
	Crew: captain	Inc InR		2/2
	Master	Er ErR		1/1
	Officers	X		1/1
	Crew	Cc		1/1
	Comments	Cc		2/2
	Total # of crew	Cc		2/2
	Waste disposal: Y/N	ErR		0/1
	Description	Cc		2/2
	Safety equipment: lifejacket provided and suitable s	Cc		1/1
	Lifejacket available	Cc		1/1
	# of lifebuoys/rings	Cc		1/1



Tufman2 - Data Quality Check

- Crosscheck T2 calculation with debriefers calculation
- Errors will be highlighted if scores don't match

Answer entry	Totals entry	Score check	Summary
Section	Score		
All forms - header details	20		
SUP-2 workbook reference form	3		
PS-1 (page 1)	43		
PS-1 (page 1) cont'd	37		
PS-1 (page 2)	15		
PS-1 (page 2) cont'd	11		
PS-2 daily log	34		
PS-2 daily log cont'd	44		
PS-3 set information	36		
PS-3 set information cont'd	33		
PS-4 length frequency	25		
PS-4 length frequency cont'd	17		

Header Details		
7	Observer name	Cc 5
8	Observer trip id no	Cc 5
9	Vessel name	Cc 5
10	Page numbers	Cc 5

20/20

Warnings and errors [Export](#)

- ☞ Totals don't match for PS-1 (page 1)
- ☞ Totals don't match for PS-1 (page 1) cont'd



Tufman2 – Score check

Answer entry	Totals entry	Score check	Summary			
Section	Field	Answer	Score	Max score	View data in trip	
All forms - header details	All forms - header details: observer name	Cc	5	5	Go to...	
	Observer trip ID #	Cc	5	5	Go to...	
	Vessel name	Cc	5	5	Go to...	
	Page numbers	Cc	5	5		
	TOTAL			20	20	
SUP-2 workbook reference form	SUP-2 workbook: observer programme deta	Cc	1	1		
	Special projects	Cc	1	1		
	Forms management	Cc	1	1		
	TOTAL			3	3	
PS-1 (page 1)	PS-1: a complete set	Cc	2	2		
	Observer programme	Cc	2	2	Go to...	
	Observer name and nationality	Cc	2	2	Go to...	
	Observer trip ID #	Cc	1	1		
	Trip start and end locations	Cc	2	2	Go to...	
	Trip start (ship's date and time)	Cc	2	2	Go to...	
	Trip end (ship's date and time)	Cc	2	2	Go to...	



Tufman2 - Summary

Answer entry	Totals entry	Score check	Summary
		Score	Percentage
All forms - header details		20/20	100.0%
Total score (PS forms 1 to 5)		316/320	98.8%
GEN and tag recovery forms		103/142	72.5%
Data forms total score		439/482	91.1%
Written report score		34/64	53.1%
Journal score		30/36	83.3%
Data presentation/submission		21/21	100.0%
TOTAL SCORE		524/603	86.9%

Current and Future Developments



- Upgrade to TUFMAN2 with new User Interface (UI)
- Integrate TUFMAN2 to other systems such as FFA OPM (Observer Placements Management System)
- SPC-OFP DCTs continue to enter the debriefing data in T2 using the Debriefing Module
- Trials on On-board LL observer data collection
- Rolling out TUFMAN2 to national programmes who have adequate resources to enter their own observer data



Thank You!

