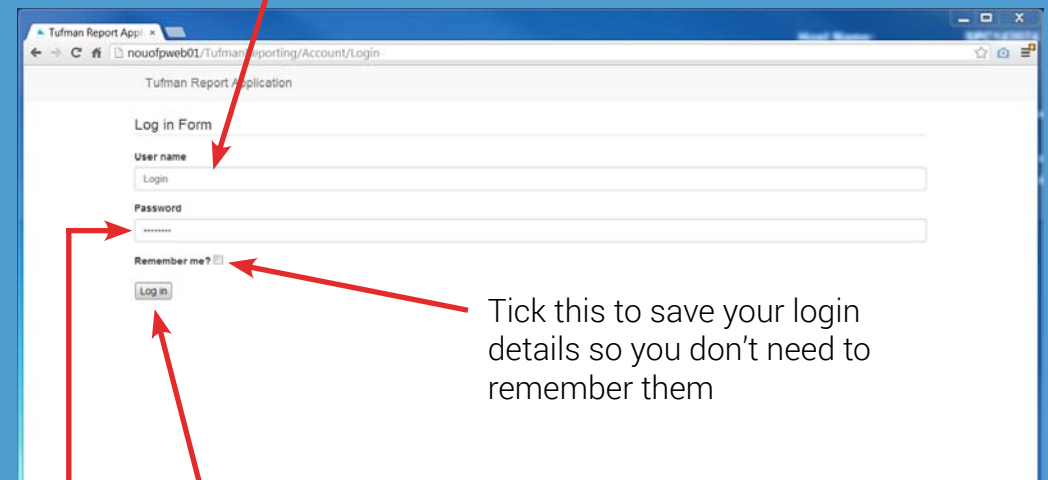
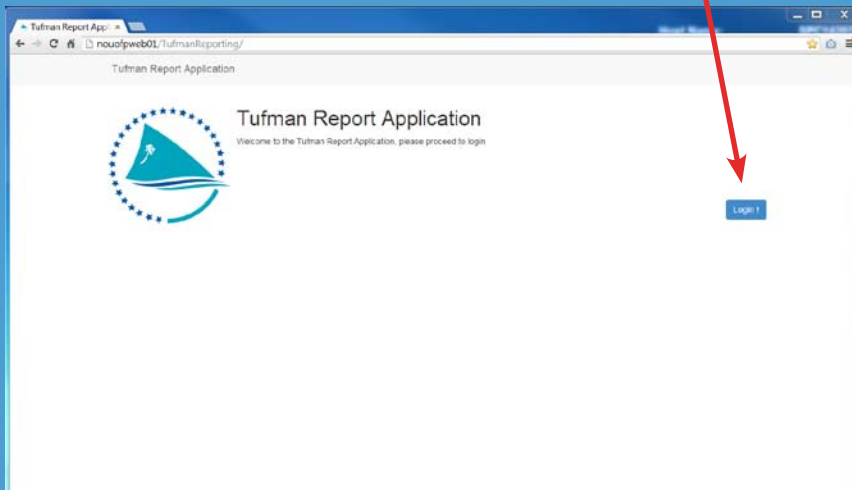


TUFMAN Reporting

To begin using TUFMAN reporting, open your web browser, navigate to <http://www.weburl.int/appendix> and click here

Enter your username here. Your username is 'tufman' all in lower case letters.



Tick this to save your login details so you don't need to remember them

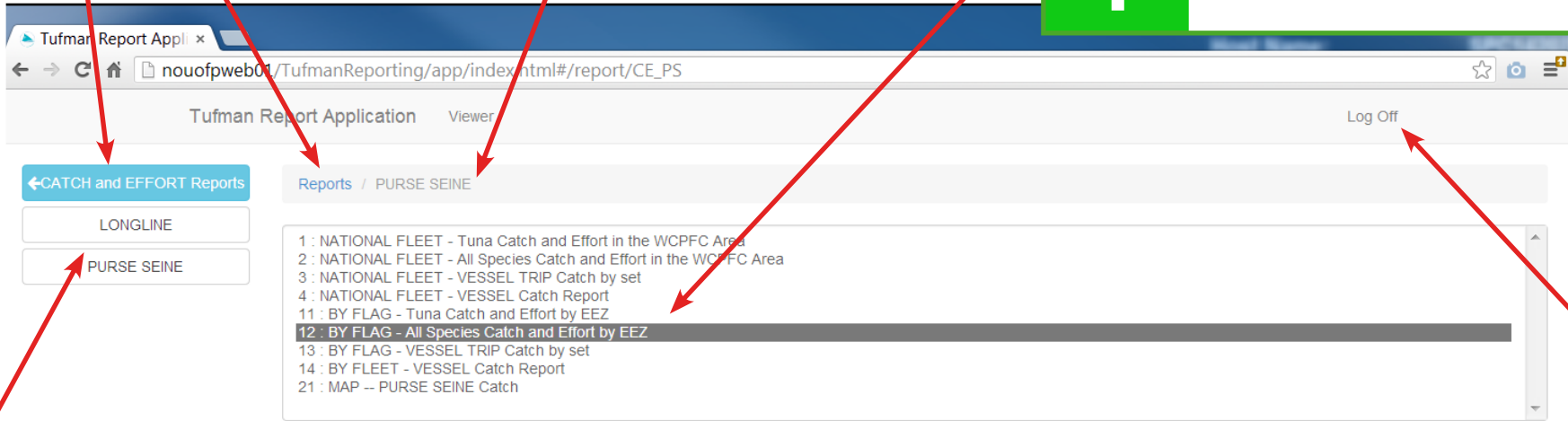
Click here to log in

Enter your password here. If you forget your password, email ofpdatahelp@spc.int

Click here or here to go back to the list of reports

The report category

1 Select the report you want to produce



Log Off

Click here to access a different type of report

2 Use these controls to filter your report by year, EEZ etc. Leave the field blank for no filtering (eg. all years).

Select the fidelity of your data (eg. Year, Year & Month)

3 View the report

Clicking this button clears all the filtering options

Click here or here to go back to the report list

Clicking any column heading sorts the table by that column. Click again to sort in the reverse order.

The name of your report

← CATCH and EFFORT Reports

LONGLINE

PURSE SEINE

Reports / LONGLINE / test

Number of records 1788 (csv)

YEAR	Vessel ID	Nb of trips
2001	1	6
2002	1	3
2003	1	9
2004	1	1
2001	2	10
2002	2	9
2003	2	15
2001	9	5
2002	9	8
2003	9	16
2004	9	13
2005	9	5
2001	10	5
2005	10	4
2001	11	8
2002	11	11
2003	11	14

Log Off

Click here to access a different report

Log Off

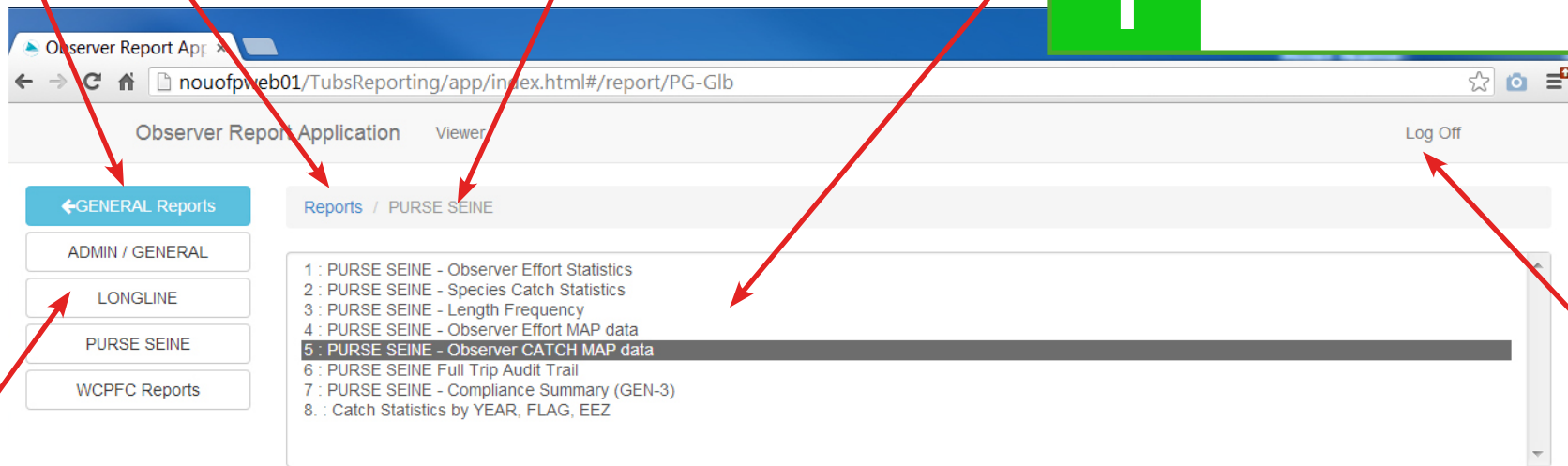
Click here to save the table to an Excel (CSV) file

Click here or here to go back to the top report list

The report category

1

Select the map or report you want to produce



Log Off

Click here to access a different type of report

Produces an extract of Observer CATCH with GIS fields for mapping, selected by YEAR, Observer Programme and Flag

Year: 2012

Flag: Samoa (Western)

Observer Program: Samoa Observer Progr

Group By: Longitude (5x5) MAPINFO, Latitude (5x5)

Trip Selection: Observer

2

Use these controls to filter your report by year, EEZ etc. Leave the field blank for no filtering (eg. all years).

3

Select Longitude 5x5 MapInfo OR Longitude 1x1 MapInfo

Reset Report Map

4

View the map

Clear all the filtering options

Errors and Help

Problem:

Incorrect login or password error message.

What to do:

1. Try logging in again. Your username is 'tufman'
2. To recover a lost password email ofpdatahelp@spc.int

Problem:

Constantly see "loading" when trying to create a map.

What to do:

1. Be patient, it can take up to 1 minute to create a map.
2. Try clicking your browser back button and clicking the map button again.
3. Install the Google Chrome web browser.

Problem:

If you click on a report category and see a black list with a red border, this means no reports have been set up for this category.

What to do:

1. Check you are in the right report category.
2. To have your desired report added, email: ofpdatahelp@spc.int

